

L CONFERENCES
MEETINGS

Lenna
OF HOBART





Thank you for your recent enquiry

Lenna of Hobart's conference team know through extensive experience, the ingredients of a successful conference, meeting or event and have the skills and resources necessary to provide the highest level of service and guarantee the success of your event.

Our organisers can meticulously plan and work with you to develop a tailored package of services and facilities to ensure your specific requirements are met and success is achieved.

Classified by the National Trust, stately Lenna features three dedicated function venues with natural light, adjoining break-out areas, garden balconies and Wi-Fi connectivity.

A popular venue with conference organisers for small to medium sized business meetings and conferences. Lenna of Hobart provides a welcome contrast to larger venues and is ideal for intimate gatherings.

Special corporate accommodation rates are available for delegates/participants at Lenna of Hobart as well as our apartment properties Salamanca Suites and Salamanca Terraces, located just across the road.

The attached information will assist with your initial planning and we look forward to being of further assistance.

Yours sincerely,

A handwritten signature in dark ink, appearing to read "Stride", is positioned above the printed name.

Samantha Stride
Assistant General Manager
sam@lenna.com.au
03 62 323 900



Lenna of Hobart, Cnr Salamanca Pl & Runnymede St, Battery Point, Hobart, Tasmania, 7004
p: 1800 030633 f: +61 3 6224 0112 e: enquiries@lenna.com.au w: lenna.com.au

L THE SITE OF LENNA
WAS ORIGINALLY
, OWNED BY CAPTAIN
JAMES BAYLEY. HE SUBSEQUENTLY
SOLD THE PROPERTY TO
ALEXANDER MCGREGOR WHO WAS
HIS PARTNER IN THE WHALING
TRADE AND WHOSE DAUGHTER,
MISS HARRIETT BAYLEY, BECAME
MCGREGOR'S FIRST WIFE. THE
MOST FAMOUS OF HIS SHIPS
AND HIS FAVOURITE WAS THE
'HARRIETT MCGREGOR'.

Lenna
OF HOBART

Meeting Rooms

Meeting Room	Room Style	Capacity/Persons*
Runnymede Room \$400.00 per day (53.0 sq m)	U shaped Table	26
	Boardroom	26
	Classroom Style	26
	Theatre Style	26
McGregor Room \$300.00 per day (32.0 sq m)	U shaped Table	12
	Boardroom	16
	Classroom Style	12
	Theatre Style	16
Harriet Room \$250.00 per day (29.0 sq m)	Boardroom	8
Alexander's \$300.00 per day Alexander's is available after 11am daily	Banquet	32 (2 x tables of 16)

Meeting room hire inclusions:

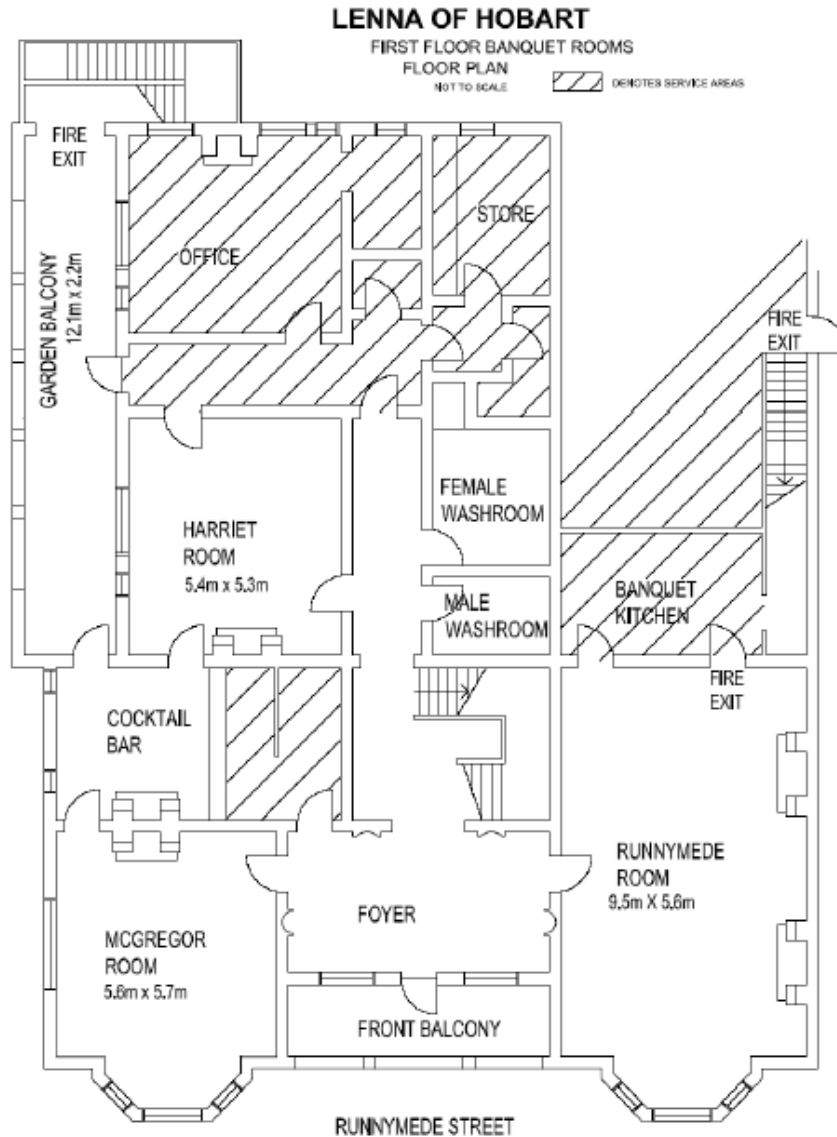
Room setup to your specifications
 Wi-Fi access
 Note pads & pens
 Ice water & mints
 Car parking (subject to availability)

*Room capacity is based on Government COVID-19 related regulations.
 Maximum number of persons per room may be reduced when adding AV equipment in the space.

The Runnymede, McGregor & Harriet Rooms are located on the first floor with stair access only. (No lift)



Floor Plan





Catering Information

Full Day Catering Package

\$42.00 pp

Continuous tea, coffee & juice

Morning tea: Chefs selection

Lunch: Your choice from the sandwich options, fresh fruit platter

Afternoon tea: Chefs selection

Seasonal whole fruit bowl

Upgrade to quiche lunch option

\$5.00 pp

Individual Catering Selections

Morning & Afternoon Tea

Tea & Coffee – Coffee & selection of teas (for 1 break)

\$4.50 pp

Tasmanian apple & orange fruit juices (for 1 break)

\$5.00 pp

Continuous tea & coffee

\$11.00 pp

Continuous tea, coffee & juice

\$14.00 pp

Choice of danishes, cake, slice, muffins, scones or sliced fruit

\$5.00 pp

Tasmanian cheese plate served with crisp breads, seasonal compote or fruit paste, dried & fresh fruits

\$12.50 pp

Lunch

Sandwich Lunch

\$25.00 pp

Your choice of sandwiches, focaccias, wraps or Turkish bread filled with a variety of gourmet Tasmanian roasted and cold meats and locally sourced salad items with chutneys and condiments
Fresh fruit platter, coffee, teas and Tasmanian juices.

Quiche Lunch

\$30.00 pp

Served with a garden salad & French stick bread.

Fresh fruit platter, coffee, teas and Tasmanian juices.

Add Tasmanian cheese plate

\$10.00 pp

Dietary Requirements

Individual dietary requirements / allergies can be catered for separately.

Please note that a surcharge may apply.



Lenna of Hobart, Cnr Salamanca Pl & Runnymede St, Battery Point, Hobart, Tasmania, 7004
p: 1800 030633 f: +61 3 6224 0112 e: enquiries@lenna.com.au w: lenna.com.au

Audio Visual Equipment

Schedule of charges per day hire

Whiteboard and Markers	\$35
Flip Chart and Paper	\$50
Screen only (if providing own projector)	\$35
Data Projector* + Screen	\$150
Speaker Phone	\$35
50" TV	\$150
Lectern	\$35

*Please note, some laptops require a HDMI adaptor.

We provide the data projector, HDMI cable & VGA cable. You may need to provide your own adaptor.



McGregor Room



Harriet Room



Accommodation

Lenna of Hobart offers hotel style accommodation, most with views of either Mount Wellington & Hobart City, Hobart's historic harbour or Princes Park. Both double and twin bedding configurations are available. Each room contains a digital HD TV with Foxtel, personal mini-bar, tea & coffee making facilities plus free Wi-Fi. Atop Lenna of Hobart accommodation are two Penthouses with a flexible number of bedrooms and bedding configurations available.

Lenna offers complimentary car parking & the convenience of 24 hour reception.

Alexanders is open for breakfast and the Chandelier Lounge is open for drinks throughout the evening.



Salamanca Suites is ideally located on the eastern end of Salamanca Place – opposite Lenna of Hobart & Salamanca Terraces. Salamanca Suites offers 18 spacious apartments each with its own balcony or courtyard. Studios offer one king bed (can be split to singles), a kitchenette and laundry facilities. Two Bedroom apartments feature two king beds (can be split to singles) and two bathrooms. They also have full kitchen and laundry facilities. Salamanca Suites offers complimentary car parking, Wi-Fi and Foxtel TV.





Accommodation

Salamanca Terraces is operated by Lenna of Hobart & located just across the road. This apartment hotel offers self-contained and fully serviced accommodation located right on Salamanca Place. Salamanca Terraces provides free Wi-Fi, 24 hour reception, daily housekeeping and complimentary on site car parking. Each room offers a HD LCD TV with Foxtel. One & Two Bedroom Apartments offer full kitchen & laundry facilities. Studios offer a kitchenette.



Lenna of Hobart, Cnr Salamanca Pl & Runnymede St, Battery Point, Hobart, Tasmania, 7004
p: 1800 030633 f: +61 3 6224 0112 e: enquiries@lenna.com.au w: lenna.com.au



Runnymede Room



Harbour View King Suite



L BUILT IN 1874, LENNA
IS A MAGNIFICENTLY
, RESTORED SANDSTONE
MANSION, CLASSIFIED BY THE
NATIONAL TRUST AND LISTED
ON THE TASMANIAN HERITAGE
REGISTER AS A SUPERB EXAMPLE OF
EARLY COLONIAL ARCHITECTURE.
LENNA IS A LANDMARK HOBART
HOTEL ASSOCIATED WITH HOBART'S
EARLY MARITIME HISTORY.

Lenna
OF HOBART

L CONFERENCES MEETINGS



Lenna of Hobart, Cnr Salamanca Pl & Runnymede St, Battery Point, Hobart, Tasmania, 7004
p: 1800 030633 f: +61 3 6224 0112 e: enquiries@lenna.com.au w: lenna.com.au